



# 48 Central park

Conceptual Image

1 & 2 BHK HOMES  
SASANE NAGAR, HADAPSAR





OUR LEGACY

## ABOUT US

At New Front Group, construction is not just a process—it's an art form. With every project, we strive to create large and magnificent works of art that captivate the senses both inside and out. Like a masterpiece, our buildings are designed to mesmerize the heart with their strokes and shades while pleasing the mind and soul with their thoughtful concepts and innovative designs. Since 1999, New Front Group has been a pioneer in Pune's real estate landscape, blending architectural brilliance, meticulous planning, and cutting-edge design to craft spaces that are as enduring as they are beautiful. Our legacy is built on a foundation of trust, quality, and a commitment to delivering spaces that stand the test of time.

Completed Projects

40

Total Sq. Ft. Completed

15  
Lakhs

Ongoing Projects

7

Upcoming Projects

2

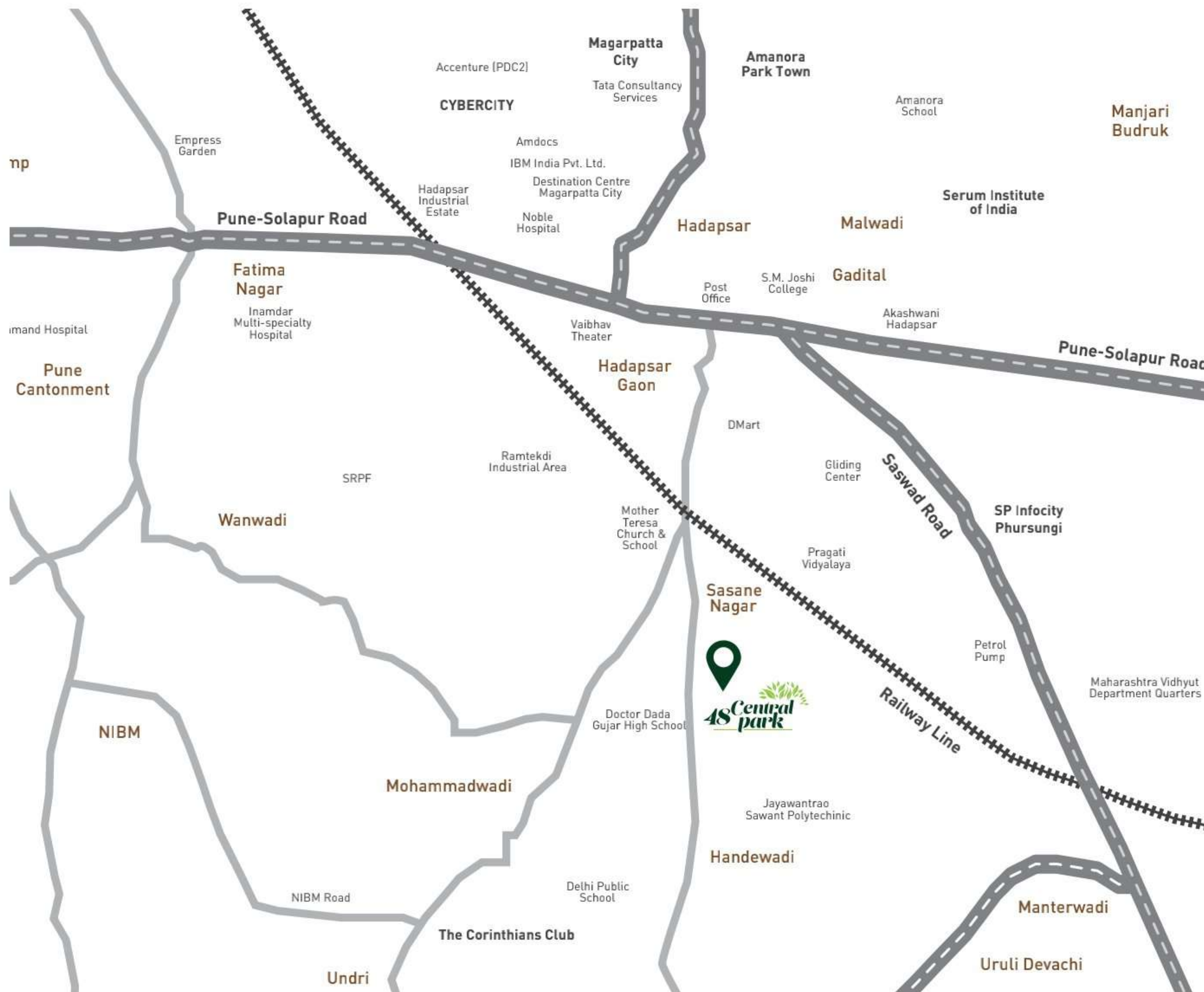




*Live  
Evergreen!*

With Superlative  
Connectivity









Artistic Impression



## *Evergreen Beginnings Await*

After the overwhelming success of 48 East Park, we are thrilled to unveil the next chapter in our visionary journey—48 Central Park. This second phase continues the legacy of exceptional living, elevating the standards set by its predecessor. Nestled in the heart of a thriving community, 48 Central Park offers an unparalleled blend of urban convenience and serene green spaces. Designed for those who seek more than just a home, it promises a lifestyle that is both luxurious and fulfilling, where every detail is crafted to perfection.



# *A Testament to Thoughtful Planning*





# Live Evergreen!

Lifetime Majestic View of  
5-Acre PMC Garden

Conceptual Image

Conceptual Image





# Live Evergreen!

At 48 Central Park, we don't just fulfill our promise of delivering a vibrant community living experience; we enhance it with a perfect harmony of energy and tranquility. Our thoughtfully curated amenities offer countless opportunities to celebrate life's moments, fostering a sense of togetherness that resonates throughout the community. Here, every day presents a new chance to create cherished memories with your friends and neighbours, as you immerse yourself in a living environment that is as joyful as it is peaceful.

## AMENITIES

- Fully automatic standard elevators with generator backup
- Main entrance with rich facade
- Entrance lobby
- Club house with party lawn
- Multi-utility area with indoor games
- Children's play area

## OTHER LIFESTYLE FEATURES

- Concrete / paved internal road
- Centralised digital connection (DTH)
- Fire-fighting systems
- Solar power backup
- EV Charging Station
- Sanitation facility for drivers & domestic help
- 24 x 7 Security
- CCTV surveillance in common areas
- Waste water treatment plant
- Rainwater harvesting



Children's play area



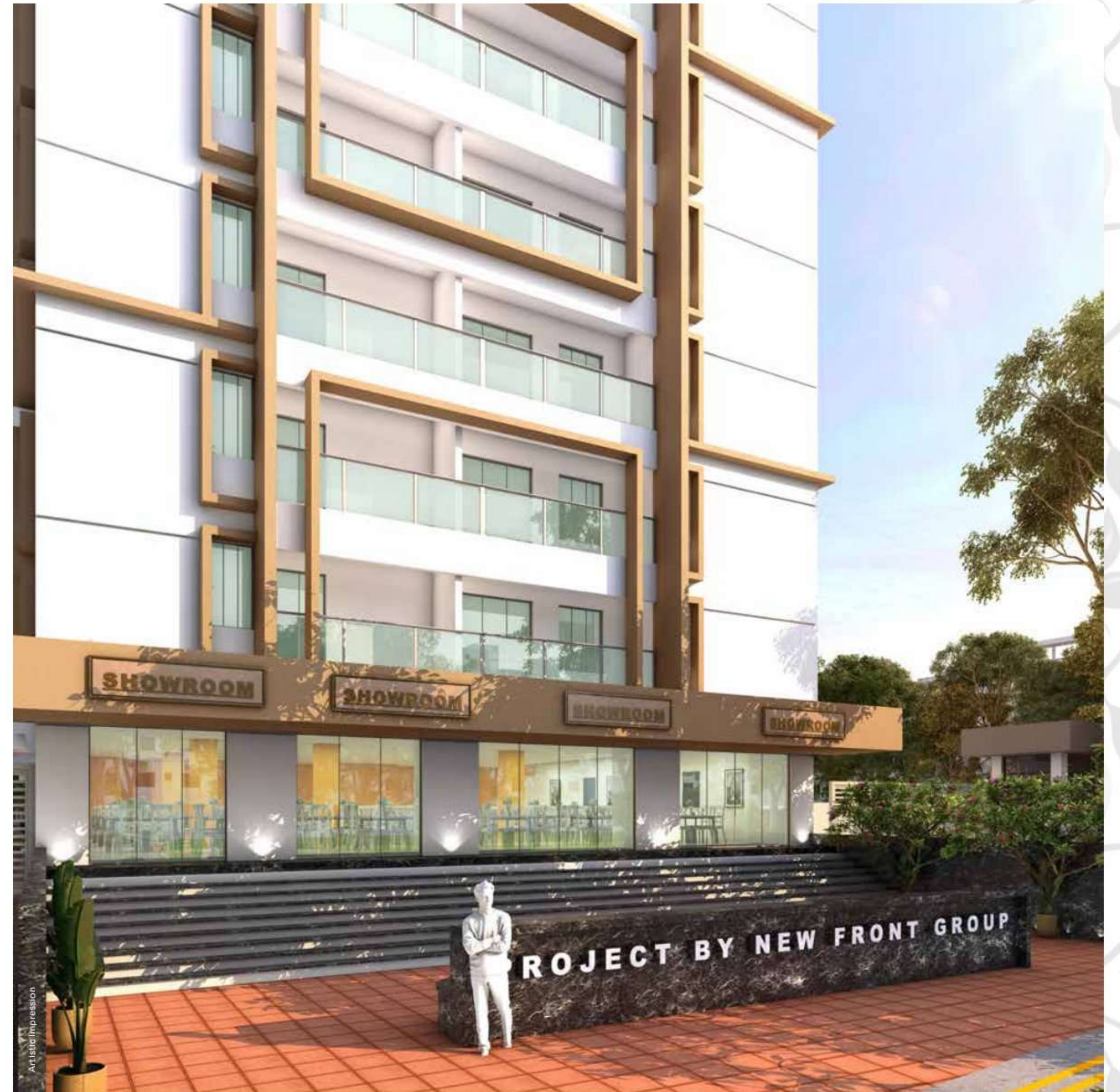
Indoor Games



EV Charging Station

All Images are Conceptual









Conceptual Image

# Live Evergreen!

With Spaciously  
Planned Apartments



## SPECIFICATIONS

### STRUCTURE & MASONARY

- R.C.C. framed structure
- Earthquake resistant design
- 6" thick block / brick masonry walls
- Sand faced external plaster
- Gypsum / POP finish for interior walls

### KITCHEN & DRY BALCONY

- Wall-to-wall granite kitchen platform with single bowl SS sink
- Attractive glazed vitrified dado tiles above Kitchen Platform up to lintel level
- Provision for exhaust fan and water purifier
- Plumbing & electrical connection for washing machine

### DOORS, WINDOWS & RAILING

- Granite sill for windows
- Powder-coated aluminium 3 track sliding windows with mosquito net
- Oil painted safety grills
- Decorated main entrance door with attractive fittings
- Granite stone fascia for all toilet & bathroom doors
- Laminated flush doors for bedrooms
- SS glass railing for balcony
- Folding powder-coated door for balcony
- WPVC doors for Toilets



### BATHROOM

- Concealed plumbing in all bathrooms
- CP fittings of reputed make
- Sanitary ware of reputed make
- Hot & cold water mixer and overhead shower
- Glazed vitrified dado up to 7'0" height

### ELECTRICAL FITTINGS

- Concealed fire resistant high quality copper wiring
- Legrand / Anchor equivalent make switches and fittings
- Earth leakage circuit breaker to each flat
- TV & telephone points in living room
- Single phase power supply
- Gen set backup for lighting & fans\*
- Provision for broadband connection
- AC point provision for Master Bedroom

### FLOORING

- Vitrified flooring for the flat
- Anti-skid vitrified flooring in toilet, bathroom & balcony

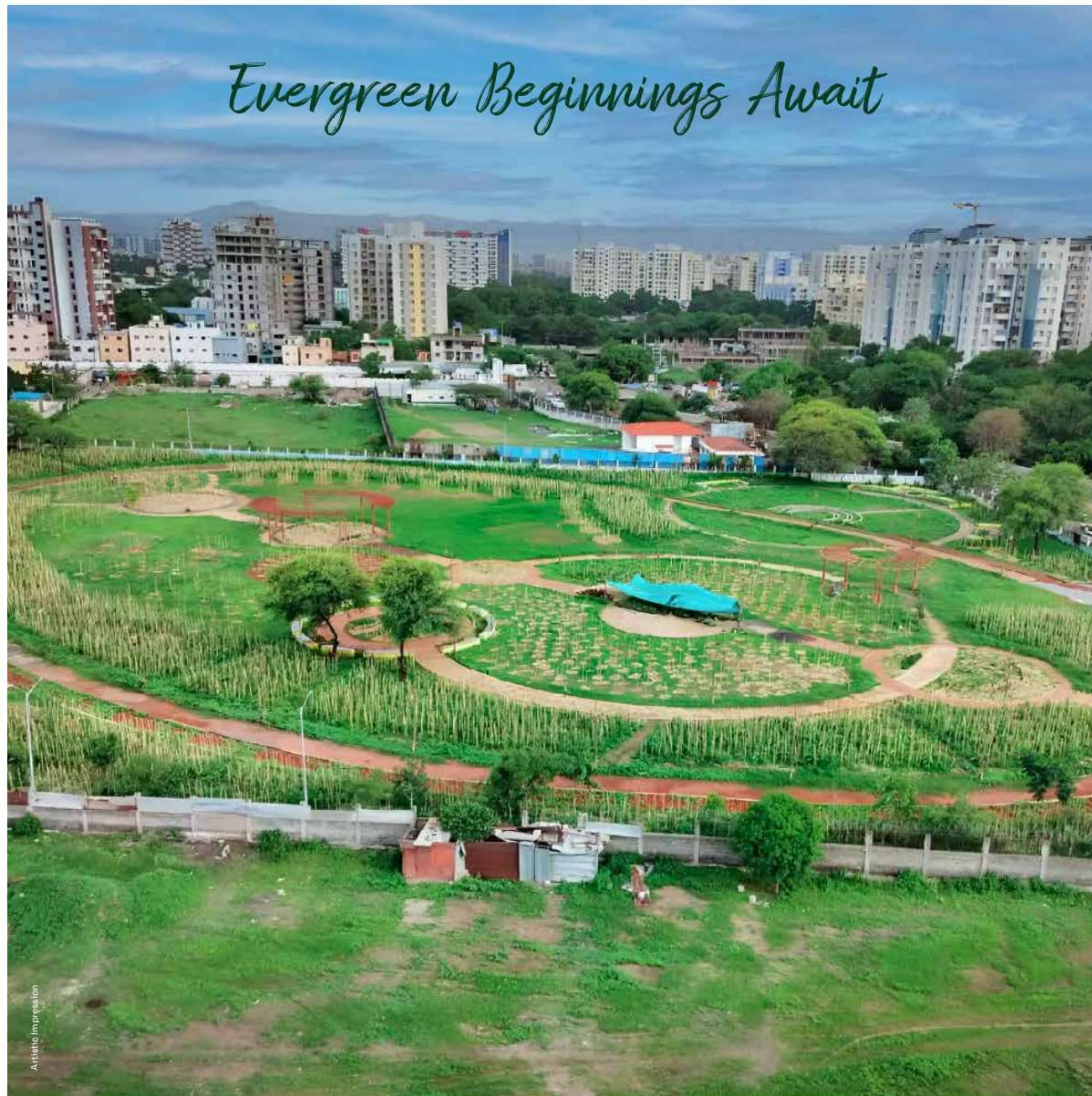
### PAINTING

- Oil bound distemper for internal walls
- Acrylic paint for external faces
- Oil paint for grills, railings





*Evergreen Beginnings Await*



Artistic Impression

**48Central  
park**



PROJECT BY:



**NEW FRONT**  
**GROUP**  
*Aesthetic spaces*

**CORPORATE ADDRESS:**

New Front Group, Kshitij Business Center, DG Dani Rd, 65/8, Erandwane, Pune - 411004, Maharashtra.

**SITE ADDRESS:**

48 Central Park, Sr. No.48, Plot no-1B,  
adjoining Gopinath Munde Udyaan, Hadapsar, Pune - 411028



**+91 89568 33030**

 **MAHARERA NO.: P52100077459 | <https://maharera.mahaonline.gov.in>**

Disclaimer: This perspective image may not be to scale or may not represent actual facade/elevation. The details of windows, paints, elevation features, landscaping, ground development, trees or any other details in this perspective are an artist's impression and could be different to actual. The viewer affirms that he/she has not taken his/her decision of purchase/booking by viewing this perspective. This brochure is not a legal offering. The developers reserve absolute rights to change/cancel any plans, layouts, no. of floors and/or specifications at their discretion. Images are for representational purposes only.